

# TEMPLE TOPICS

TEMPLE BETH AM 4660 SHERIDAN DRIVE WILLIAMSVILLE, NY 14221 (716) 633-8877 FAX (716) 633-8952

OCTOBER 2008

TISHREI - CHESHVAN 5769

From Rabbi Irwin A. Tanenbaum, D.D.



Dear Friends,

What a month this promises to be! During October this year, we will celebrate together Rosh Hashanah and Yom Kippur, with Shabbat Shuvah in between on Friday October 3rd. Then, on Tuesday October 14th at 10:30 AM, we will join with our sister congregations of Temple Beth Zion, Temple Sinai, and Havurah

to usher in the week-long festival of Sukkot. This year, our Temple Beth Am is privileged to host the joyous occasion.

As you know, part of the celebration includes the all-important shaking of the lulav in every direction – the four points of the compass, and up and down. This has been traditionally explained from our earliest days as acknowledging God's all-encompassing presence.

But in Hasidic thought, the practice took on other symbolic, spiritual meanings. Hasidism brought the mystical teachings of the Kabbalah to the masses, reinterpreting long-standing traditions in new ways.

For Rabbi Shlomo Carlebach, *alev hashalom*, the shaking of the lulav was a meditation that could last half an hour (we will not emulate that during our service!). Each direction had significance; each represented a different prayer.

The following is adapted from Rabbi Carlebach's teachings:

First, face right. Right in Kabbalah signifies the attribute of *chesed*, beneficence. It's a reminder of Abraham, master of hospitality. Facing right, slowly shaking the lulav in and out three times, think about all the *chesed*, the giving in your life, and pray to God to perfect it. Do you find it too hard to be generous? Or are you suffering from an excess of generosity, of kindness, of love? "We don't know when to love and how to love and we always put so many borders in the wrong place," explained Rabbi Carlebach. Facing right, pray for God to grant you the proper measure of *chesed*.

Then face left. Left in Kabbalah is *gevurah* – strength, strict judgment, limits. *Gevurah* is Isaac – bound for sacrifice on Mount Moriah, unflinching, accepting of judgment. Take this opportunity to think of the limits, the judgments in your life. Do you need more boundaries, or fewer? Do you need more strength? This is an opportunity to invite God to help you fix the limits in your life.

(continued on page 2)

**Yamim Nora'im (Days of Awe) 5768/5769**  
The High Holy Days Services of Temple Beth Am

**Rosh Hashanah Second Day**

**Wednesday, October 1, 2008**

**10:30 AM** Second Day Service

**Shabbat Shuvah**

**Friday, October 3, 2008**

**6:00 PM** Erev Shabbat Shuvah (please note corrected time)

**Saturday, October 4, 2008**

**9:00 AM** Shabbat Morning Torah Study

**Kever Avot**

**Sunday, October 5, 2008**

**1:30 PM** White Chapel Memorial Park

**Yom Kippur**

**Kol Nidre**

**Wednesday, October 8, 2008**

**6:00 PM** Early Service (A-L)

**8:45 PM** Late Service (M-Z)

**Yom Kippur**

**Thursday, October 9, 2008**

**9:00 AM** Early Service (A-L)

**11:45 AM** Late Service (M-Z)

**2:15 PM** Reflections and Study

**3:00 PM** Family Service

**4:15 PM** Mincha Service

**6:00 PM** Yizkor Memorial Service and Ne'ilah

Concluding Service. Break the fast together immediately following the Service.

RSVP is requested by calling 633-8877.

**Sukkot**

**Tuesday, October 14, 2008**

**10:30 AM** Joint Liberal Sukkot Service at Temple Beth Am

**Friday, October 17, 2008**

**7:30 PM** Sukkot Shabbat Service and Kabbalat Torah v'Siddur

**Monday, October 20, 2008**

**7:00 PM** Simchat Torah and Consecration Service

**Tuesday, October 21, 2008**

**10:30 AM** Joint Liberal Shemini Atzeret Service

and Yizkor at Temple Beth Zion (Delaware Bldg.)

## Upcoming Services October 2008

**Wednesday, October 1, 2008**  
10:30 PM Rosh Hashana  
Second Day Service

**Shabbat Shuvah**  
**Parashat Vayelech**  
Deuteronomy 31:1 – 1:30

**Friday, October 3, 2008**  
6:00 PM Erev Shabbat Service

**Saturday, October 4, 2008**  
9:00 AM Torah Study

**Wednesday, October 8, 2008**  
6:00 PM Kol Nidre Early Service (A-L)  
8:45 PM Kol Nidre Late Service (M-Z)

**Thursday, October 9, 2008**  
9:00 AM Yom Kippur  
Early Service (A-L)  
11:45 AM Yom Kippur  
Late Service (M-Z)  
3:00 PM Family Service  
4:15 PM Mincha Service  
6:00 PM Yizkor and Ne'ilah Service

\*\*\*

**Parashat Haazinu**  
Deuteronomy 32:1 – 52

**Friday, October 10, 2008**  
7:30 PM Erev Shabbat Service

**Saturday, October 11, 2008**  
9:00 AM Torah Study  
10:30 PM Shabbat Morning Service  
Bar Mitzvah of Michael Rapaport

**Tuesday, October 14, 2008**  
10:30 AM Joint Liberal Sukkot Service  
at Temple Beth Am

\*\*\*

**Sukkot**  
Exodus 33:12-34:26

**Friday, October 17, 2008**  
7:30 PM Erev Shabbat Family Service  
Grade 6 & 7 Participating  
Kabbalat Torah v'Siddur

**Saturday, October 18, 2008**  
9:00 AM Torah Study

**Monday, October 20, 2008**  
7:00 PM Simchat Torah Service  
Consecration

**Tuesday, October 21, 2008**  
10:30 AM Joint Liberal Shemini Atzeret  
Service and Yizkor at Temple Beth Zion  
(Delaware Building)

*(continued on page 12)*

## Thanksgiving Baskets Project We Need Your Help

Temple Beth Am will be working with North Presbyterian Church again this year on our interfaith project to create Thanksgiving Baskets for needy people in Buffalo. Last year, with your help, we prepared over 530 baskets of food for local agencies that feed the hungry. Please consider donating nonperishable foods, including stuffing mix, canned vegetables or fruit, cranberry sauce, raw potatoes, cake mix/dessert, beverage, a frozen turkey, a boxed dinner of these items for a family of 4, or a monetary donation. Most local supermarkets heavily discount turkey prices in November, so please consider buying an extra one to donate. Those prices are much lower than we can buy turkeys, so your donation goes a lot farther.

All food will be delivered to agencies on Sunday, November 23rd. Nonperishable foods can be dropped off at TBA anytime earlier, but frozen turkeys must be delivered on Sunday morning, November 23rd, between 8-10 AM, due to lack of freezer space at TBA. Please notify me if you intend to drop off a dinner or turkey. If you need additional information, or you would like to volunteer to help, please contact Chris Cohan (688-6890, [ccohan@buffalo.edu](mailto:ccohan@buffalo.edu)) anytime. Share the joy of Thanksgiving with those in the community who are hungry and need our help.



### Rabbi *(continued from page 1)*

Next, face straight ahead: *tiferet*, or beauty. This is the balance, where the beneficence and the boundaries are in their proper proportions. It represents Jacob; it is the middle course.

Then, look up. Can you connect with God? What's the holiness you need in your life? How high can you rise this year?

Then, aim down. This is about groundedness, about your foundations. And it's about your ability to find the buried treasures, under your feet; the truths buried in the dirt.

Finally, backwards. The essence of repentance is being able to go back and fix your past. This is a prayer that your past is fixed by your coming to terms with it.

There is always something new to learn, another approach that enriches and sustains our soul. Thanks to Rabbi Carlebach's innovative approach to Sukkot, may our worship this year – and our celebrations – gain greater meaning.

Dear friends, I do hope you are able to participate in our annual joint Sukkot Service, and in all the other great opportunities to worship and celebrate together during the momentous month of Tishri (corresponding this year almost precisely with October). Please note the worship times in Temple Topics.

May there be peace in your homes, contentment in your hearts.

*B'shalom,*

*Rabbi David A. Tanenbaum, D.D.*

### In Memoriam

Our Temple extends its sympathy to the families of:

**Jerry Cooper**  
**Joseph DiVita**

## Awe - The Essence of Prayer

by Cantor Susan Wehle

We are still in the midst of the "Days of Awe." Recently, I began to consider the meaning of the word "awe." One of the words in Hebrew for awe is *norah*, which is based on the word for fear. The American College Dictionary defines awe as, "Respectful or reverential fear, inspired by what is grand or sublime." Is awe a form of fear? What are we afraid of? Our own loss of control over the unknown? We have all experienced fear, but what is the experience of awe? Maggid Andy Gold tells us that, "Awe is generated in the present moment. One cannot experience awe now, from yesterday's insight. Awe arises ... from the experience of connection that [comes up] through an expansion of consciousness, a deepening of our previous understanding. Our breath is literally taken away as the oxygen that sustains the limited self is replaced by the [*RuachHaKodesh*] who whispers from within 'AH HA,' in a voice that sounds fa-



miliarly like our own. ... [We are invited] to allow awe to arise within us as the depth of our vision is expanded by our willingness to engage that which is beyond our current grasp. It is through the experience of awe that what had [previously] been unknown to us is now revealed."

How do we experience days of "awe" during the High Holy Days, and how do we continue that experience as the year progresses? Starting on October 23rd, as part of our TBA Thursday night Adult Education Series, I will be teaching a six-week class called The Essence of Prayer. In that class, we will look deeply at some of our most familiar prayers, talk about the words, what they mean, and how we can experience those words in a potentially transformative way. The deeper we delve, the higher we fly!

*G'mar chatimah tovah!* May you be sealed for a good year in the Book of Life.

The friends and family of the late Dr. Barnett Slepian invite you to the 10th Anniversary Memorial Service to be held on Sunday, October 26, 2008, at 3:00 PM. A reception will follow.

### Walk Off Hunger & Summer Fest: WOW!

August 2, 2008, just may be one of the most memorable days in Temple Beth Am's history. The first annual Walk Off Hunger and Summer Fest not only exceeded all expectations, they shattered them.

First and foremost, the Walk-A-Thon has now raised an amazing \$25,000 for the Food Bank of Western New York. That money will provide 137,000 meals for families in need. What a mitzvah!

This event gained our Temple priceless publicity and good will in the community. The news coverage included: three articles in the Buffalo News, three in the Amherst Bee, four in the Buffalo Jewish Review, along with FIVE appearances on Channel 2 and one on Channel 7.

The organizers received a flood of congratulations from members of the community, including many of the companies that sponsored the Walk-A-Thon. Here are just a few excerpts: "The walk was absolutely wonderful," and "Lots of kudos to the good people of Temple Beth Am."

Summer Fest was also a success in many ways. It was profitable, and provided funds that will help Temple Beth Am in many ways. It was a fun and entertaining event. Perhaps most important, it brought Temple members together. Members of the committee who didn't know each other well before this have become friends. Temple members who volunteered had a good time. One of them emailed the committee this comment: "We met some great Temple members while volunteering."

For a congregation that's a "Family of Families," you can't ask for more than that!

## Temple Beth Am

### Rabbi

Irwin A. Tanenbaum, D.D.

### Cantor

Susan Wehle

### Administrator

Richard A. Ellis

### Director of Education

Sharon Malek Jacobs

### Youth Group Advisor

Gina Herzbrun

### Junior Youth Group Advisors

Liz Messer & Marjorie Deschner

### President

David Berghash

### V.P. Administration

Daniel Wolfe

### V.P. Membership

Jay Mesnekoff

### V.P. Worship

Judy Henn

### V.P. Education

Heidi Neu

### V.P. Finance

Joseph Glickman

### Secretary

Lisbeth Rothschild Nye

### Treasurer

Joanne Rekoon

### Immediate Past President

Blaine Schwartz

### Sisterhood President

Janice Cohen

### Men's Group President

Todd Sugarman

### Topics Editor

Sharlene Vogler

### Temple Office Telephone

633-8877

633-8878 (after hours and weekends)

### Temple Office Fax

633-8952

### Religious School Telephone

633-8953



### December Temple Topics Deadline

The deadline for articles to be submitted for inclusion in the **December 2008** issue of Temple Topics is **October 21, 2008**. Please submit articles to the editor at [Editor@BethAmBuffalo.org](mailto:Editor@BethAmBuffalo.org).

**Cheshbon - Check Please!**  
*by Sharon Malek Jacobs, Director of Education*

The modern Hebrew language effectively uses Biblical terms in everyday life. In Israel, as one prepares to depart a restaurant the patron may ask the waiter with a questioning inflection, *cheshbon b'vakasha* - check or bill please.

In biblical terms *cheshbon* is a spiritual accounting or evaluation. It is appropriate for each of us to pursue a personal inventory as we approach the Days of Awe that fall between Rosh Hashanah and Yom Kippur.

During the 17<sup>th</sup> century, the Ramchal wrote in "The Path of the Just" a work of Jewish ethics: "A person needs to carefully

examine his ways and weigh them daily - just as a successful business person constantly evaluates all his undertakings so that nothing goes wrong. A person should set aside definite times and hours for this evaluation so that it isn't performed haphazardly, but rather is conducted with the greatest regularity for it yields rich returns."

This is the season to try this self-reexamination. Possible areas that Aish.com suggests you may choose from are: relationships, spirituality, character development, Torah study, career, global and community concerns, and health and finances. In addition, do not forget to regularly monitor short-term and long-term goals using - *cheshbon!*

**Monday, October 20th at 7:00PM**  
**Simchat Torah Family Service & Consecration**

Consecration of Kindergarten and  
NEW students will take place.

Each new student will receive a mini Torah,  
certificate and honey treat.

Kindergarten and new student participation.  
There will be special Simchat Torah festivities!

Young Families - this will be fun for you too!

**Do You Have a Child Going Off to College?  
Or One Already There?**

Please join us on Thursday, October 23rd at 7:30 PM as we discuss this major transition in our lives. Temple Beth Am member Linda Nash, PhD, will lead the discussion. Refreshments will follow. If you have any questions, please call Joanne Rekoon at 688-4436.

**GANAINU**  
**Spread the Word!!**



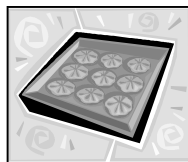
It is not too late to sign-up for our outstanding monthly program for 3 and 4 year olds, with a parent or grandparent.

Special projects, songs, stories, games, snacks and more will be available to your youngster.

For registration forms, contact the Religious School office at 633-8953.

**Class meets Sunday, October 5th  
and November 9th at 9:00 AM.**

**It's Cookie Dough Sale Time**



Temple Beth Am Religious School will again be selling Cookie Dough. Students will receive brochures in October. The sale will conclude on November 9th. Delivery will be on or about December 12th. Prizes will be awarded for the top three sales.

**Make your Chanukah cookies the easy way!**

Cookie Dough makes a great gift for workplace friends, or your co-workers may want to buy some for their friends. The prepared cookie dough can lead to a ready made fun, family experience. Our cookie dough is kosher. Proceeds from this sale will subsidize special Religious School programs.

**Please make checks payable to Temple Beth Am.**

**Thank You**

On behalf of the Religious School, we want to thank Joanne Rekoon and her committee, as well as the Parent Council, for all their help and support with our first fundraiser of the year - the 16th Annual Book Fair.

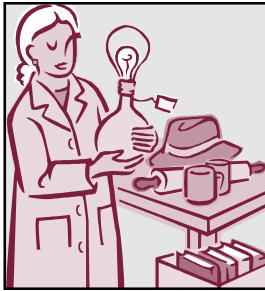
**Religious School Volunteers Needed!**

The Religious School is looking for some mature volunteers for our 3<sup>rd</sup> - 6<sup>th</sup> grade assessments project. The volunteers should enjoy working with children, and possess a comfort level with Hebrew prayers. If you are interested, please leave your name and telephone number with the Religious School office at 633-8953.

## Temple Beth Am Sisterhood Rummage Sale

Sunday, November 2, 2008  
9:00AM - 2:00PM

If it's clean and saleable, we can use it. Clothes, toys, books, records, household articles, ... anything! Please drop off your items by November 1st!



Volunteers needed to help set up the Rummage Sale on Saturday, November 1st. 3:00 PM to 8:00 PM Call Evelyn Herman at 833-7405 for details!

Admission only \$1.00  
\$10 Bag Sale at 1:00 PM

Don't Miss Sisterhood's Paid-Up Brunch



Sunday, October 26th  
11:00 AM - 1:00 PM  
Temple Beth Am Open Area

Please make your reservation by October 19th by contacting: Jan Cohen (689-3147) or [janlesliec@aol.com](mailto:janlesliec@aol.com), or Evelyn Herman (833-7405) or [bherman100@aol.com](mailto:bherman100@aol.com).

This year, we encourage all of our Sisterhood members to bring a TBA Congregant who is not currently a Sisterhood member to this delightful event, for a nominal fee of \$5.00.

All Sisterhood membership information is available on the Temple's web site at [www.BethAmBuffalo.org](http://www.BethAmBuffalo.org).



### Helping Temple the eBay Way

Sisterhood has come up with an easy way to raise money for the Temple. All it takes is a little online auction action.

Here's how it works. You donate an item, it gets sold on eBay, the Temple gets money, and you get a tax deduction. The items can be electronics, antiques and collectibles, artwork, kitchenware, tools, sporting goods, musical instruments... anything that can be sold. (In other words, better quality than rummage sale material).

Larry Cohen has agreed to sell and ship the items out of his store, Shipping HQ, 4498 Main Street, Amherst NY 14226, for a small service fee. (The store is located in Snyder Square II on Main & Harlem.) The Temple gets the rest, and your tax deduction will be for that amount.

If you'd like to find out more about this exciting and easy way to help out our Temple, call Rella Corris at 636-1541. Or e-mail her at [scorris@juno.com](mailto:scorris@juno.com). So check your attic or basement, and get going, going, gone!

### Mazel Tov to Our Bar Mitzvah and His Family



Michael Rapaport  
October 11th, 10:30 AM

### SUBS IN THE SUKKAH!

Make Your Own Edible Sukkah!

Sunday, October 19<sup>th</sup>  
please join us at 11:15 AM for sub sandwiches at the Sukkah. (Lunch is indoors if it rains.)

Lunch will include a variety of sub sandwiches, chips, beverage & dessert. Peanut butter & jelly will also be available.



\$5 per person  
Reservations due by 10/14/08 with your check made payable to Temple Beth Am.



Join with BATY and recycle your newspaper, old mail, magazines, phone books and paper. The money raised helps support the Youth Group!

You don't have to just be celebrating a Bar/Bat Mitzvah to sponsor an Oneg! Celebrate any Simcha! Call Jan Cohen at 689-3147 for all of the details.

**Greetings from Sisterhood**  
*by Jan Cohen, Sisterhood President*

Greetings Ladies:

Just a few reminders from Sisterhood for October. On October 26th, we will be having our Annual Paid-Up Membership Brunch. We are planning to have a guest speaker for your entertainment, and a surprise raffle just for fun. It goes without saying that the food will be plentiful and delicious.

On October 29th, we are planning a very special fundraiser. It will be a full course luncheon at Carrabba's Grill, open to everyone, so plan to attend and bring your spouse, your friends, your family - anyone who enjoys good food and good company.

Here's a November reminder. November 2nd is our Annual Fall Rummage Sale. Please search your closets and basements for items in good condition - clothing, furniture, jewelry, toys, books - anything you can donate will help.

And, don't forget, we'd love to see you at our meetings, the second Tuesday of each month. Check the Temple calendar for updates.

**The Sisterhood of Temple Beth Am**  
**Cordially Invites You (Women AND Men) to a Fundraiser at:**



**CARRABBA'S ITALIAN GRILL**  
**1645 Niagara Falls Blvd.**  
**(Behind Lowe's)**  
**Amherst, NY 14226**



**On Wednesday, October 29, 2008**

**11:45 AM**  
**12:00 PM**  
**\$18.00**

Sign-in  
Lunch (Chef's Choice - Salad, Entree, Dessert, Beverage)  
Per Person (includes tax and gratuity)

**Everyone is welcome—members and non-members. YOUR PAYMENT MUST BE RECEIVED BY OCTOBER 15TH. We can only seat 100 people, so get your check in early!**

Please make checks payable to "TBA Sisterhood," and mail your check and this Reservation Form to the Sisterhood Treasurer:

Evelyn Herman  
52 Fairbanks Avenue  
Buffalo, NY 14223

**RESERVATION FORM**  
**October 29th Sisterhood Luncheon**  
**Reservation deadline is October 15th!**

Names (Please Print)

1. \_\_\_\_\_
2. \_\_\_\_\_
3. \_\_\_\_\_
4. \_\_\_\_\_
5. \_\_\_\_\_
6. \_\_\_\_\_

Total # of People \_\_\_\_\_ @ \$18.00 each = \$ \_\_\_\_\_

## High Holy Day Service Information

**Kever Avot  
Graveside Memorial Service**  
Sunday, October 5, 2008  
1:30 PM

It is traditional to visit the graves of loved ones in the time before the Days of Awe. Please join Rabbi Tanenbaum as we gather at the Temple Beth Am section of White Chapel Memorial Park Cemetery at Niagara Falls Boulevard and Tonawanda Creek Road. After a brief Service, there will be time for private reflection.

### Family Service

Our Family Service on Yom Kippur will be led by our Clergy with music by guitarist Andy Symons. This Service is open to the entire Community.

### High Holy Day Parking

**Please Note: Additional parking is available on Tristan Lane, Indian Trail, and at the Church at the corner of Indian Trail and Sheridan Drive. Do not block fire hydrants or driveways. Thank you!**

### Temple Beth Am Participates with United Way of Buffalo & Erie County

Temple Beth Am is a proud participant in the United Way of Buffalo & Erie County Community Care Campaign and Donor Choice Program for 2008. The United Way Community Care Campaign provides donors with a unique opportunity to support a diverse network of human services. A gift to the United Way Community Care Campaign ensures that critical needs are met in the community. In addition to your gift to United Way Community Care, you may consider adding a gift designated for Temple Beth Am.

### Fasting

Every Jewish person over the age of Bar/Bat Mitzvah is expected to fast on Yom Kippur. Besides the lessons that fasting teaches about self-denial and appreciation of what we are, it provides a physical complement to the emotional and spiritual cleansing of the Day of Atonement. Children should be encouraged to fast if they show an interest in doing so. For a pre-Bar/Bat Mitzvah, the fast may involve skipping a meal during Yom Kippur rather than a full day's fast. **Pregnant women and nursing mothers should abstain from fasting as should any person who is ill or who has been advised against fasting by a physician.** Let common sense guide you in the fulfillment of this mitzvah.

### Child Care Available for High Holy Days

Temple Beth Am provides complimentary childcare for children in third grade and younger during morning services on Yom Kippur. Children in fourth grade and above are expected to attend services with their parents. Older children should not find it difficult to sit through the entire service. Every parent must be responsible to assure that his/her child does not linger in the foyer, become unruly, or disturb the childcare services.

**Families interested in child care are asked to make reservations by calling the Temple office at 633-8877 with the names and ages of every child.**

Please indicate which service (early or late) you will be attending. RSVPs are required for child care!

**Your Family. Our Heritage.  
Israel's Future.**

**State of Israel Bonds  
High Holy Days Campaign  
2008-5769**

### Calling all Shofar Blowers

**Come blow your horn at the Ne'ilah Service, the last Service of Yom Kippur Day, Thursday, October 9, 2008. Bring your own Shofar, or borrow one of ours. Let's end the High Holy Days with a big communal blast!**

### High Holy Day Ticket Policy Reminder

High Holy Day Tickets have been sent only to those members in "good standing." "Good standing" is defined as being current with your dues payments. If you did not receive your tickets, or if you any have questions, please call the Temple Office at 633-8877.

Tickets will be available to all members at a **Ticket Will Call Window conveniently located at the entrance to the Marshall & Marlene Glickman School of Jewish Learning.**

Ushers will be at Temple to assist you for this and any other concerns you may have throughout the Services.

### Welcome New Members

Seth & Stephanie Brauner  
Andrea Christopher  
Ethan & Lauren Colliver  
Jennifer & Philip Kilinskas  
Molly Lettman  
Stewart Mednick  
Michele & Michael Parentis  
Gloria A. Sadler

## October Donations *(those received by August 21, 2008)*

### The Endowment Fund

#### In Memory of:

Aunt Ida Bilsky, by Mrs. Eve Fertig  
Sandra Gale Klein-Davidson, by  
Dolores Frankel  
Andrew and Bonnie Levine  
Shirley Davis, sister of Ruth Miller, by  
Norma and George Pearlman  
Edith Fenston, by William and Gloria Fenston  
Martha Goldenberg, by Phoebe and Harold Meyers  
Lottie Grossberg, by  
Joanne Berger's friends and neighbors  
Zhanna and Val Racine  
Mr. And Mrs. Howard A. Rein  
Will Johnson, Marvin Dorskind and  
Judy Goldberg Alcabes, by  
Sue, Heather and Matt Johnson  
Dr. Irwin Kozinn, by  
Larry and Nancy Birzon  
Evelyn Solomons and Samuel Arnovitz  
Sophie Kweller, by Carole and Gary Bluestein  
Sumner Leondar, by Selma Leondar  
Samuel Maxick, by Faye Maxick  
Isabelle Roberts, by Friends in the  
Adirondack Community  
Henry Schaktman, by Dorothy Schaktman

#### In Honor of:

Bertie and Jerry Arywitz, on their very special  
Anniversary, by Norma and George Pearlman  
Diana Becker, with get well wishes, by  
Norma and George Pearlman  
Marna and Irwin Burstein on their 50th Anniversary,  
by Myra and Herb Falk  
Bill Greene, on his 90th Birthday, by  
Eric and Ruth Lansing  
George Pearlman, on his 80th Birthday, by  
Selma Leondar

### The Rabbi's Discretionary Fund

#### In Memory of:

Malcolm D. Brutman, by Mary Ann Vanderwerf  
Milton D. Cohn, by Mary Lou Davis  
Gene Daniels, by Jeanne Balsom  
Selma Fortgang, by Lexi Walsh  
Lottie Grossberg, by Bruce and Marianne Wisbaum  
Stephen Ira Haber, by Esther Haber Kranitz  
Robert Kranitz, by Esther Haber Kranitz  
Marvin Mednick, by Bobbie Mednick  
Isabelle Roberts, by Harold Roberts

#### In Honor of:

The Mark Family, on the birth of Greta Eve, by  
Jeanne Balsom

### The Administrator's Discretionary Fund

#### In Memory of:

Harold Korn, by Charles Korn and Deborah Raiken  
Dr. Irwin Kozinn, by Jennie Pohl  
Sophie Kweller, by Marianne and Bruce Wisbaum  
Lillian Ziff, by Dorothy Schaktman

#### In Honor of:

Tobi and Larry Horwitz, on the birth of their  
Granddaughter, by Jennie Pohl

### The Cantor's Discretionary Fund

#### In Memory of:

Eugene L. Daniels, by Meyer Tubin and  
Shirley Shalwitz  
Sandra Gale Klein-Davidson, by Meyer Tubin and  
Shirley Shalwitz  
Marion Macks, by Faye Axlerod  
Isabelle Roberts, by  
Sima Lewis  
Harold Roberts

#### In Honor of:

Dr. Gunilla Theander Kester, for winning an  
International Publisher's Award for her poem,  
"Shiri's Piano," by N.Jo Tufts

#### In Appreciation of:

Kindness during recovery, by Mickey Epter  
Officiating at Shiva Services for Sophie Kweller, by  
the Kweller Family  
Officiating at their Wedding, by  
Sue and Tom Mansfield

### The Educator's Discretionary Fund

#### In Memory of:

Jeanette Gerstman, by Lillian Gerstman and  
Jen Innerfield

### The Building Fund

#### In Memory of:

Dr. Harold P. Rubin, by Sue, Jeff, Scott and  
Mindy Nigoff  
Sam Wald, by Shelly, David, Samantha and  
Benjamin Wald

### The Cemetery Fund

#### In Memory of:

Dr. Harold P. Rubin, by Sue, Jeff, Scott and  
Mindy Nigoff

### The Caring Committee Fund

#### In Memory of:

Max Alderman, by Mary Alderman

### The Education Fund

#### In Memory of:

Judy Goldberg Alcabes, by Judy and Phil Brody  
Lottie Grossberg, by  
Judy, Bob, Alyssa, Jami, Andrea and  
Jason Cohen  
Marty Fink  
Henry and Lynn Ullman  
Pamela Wilcox, by Joel Reiner  
Shirley Winters, by Diane and Gerald Symons

### The Fight Hunger Fund

#### In Memory of:

Martin Reider, by Joanne and Gary Stromberg

*(continued on page 9)*

## October Donations *(those received by August 21, 2008)*

### The Landscaping Fund

**In Memory of:**

Molly Blotnik, by Melvin and Linda Sunshine  
Harold Gefsky, by the  
Sisterhood of Temple Beth Am  
Lottie Grossberg, by  
the Sisterhood of Temple Beth Am  
Dr. Irwin Kozinn, by  
the Sisterhood of Temple Beth Am  
Abraham Pearlman, by George and Norma Pearlman  
Betty Reizman, by  
the Sisterhood of Temple Beth Am  
Bert F. Weil, by Inge L. Strauss  
Gertrude Weil, by Inge L. Strauss

**In Honor of:**

Bertie and Jerry Arywitz, on their 60th Anniversary,  
by Dr. and Mrs. Stanley Arbeit  
Henry Neu, for a speedy recovery, by  
the Sisterhood of Temple Beth Am  
Mark Whitcomb, for a speedy recovery, by  
the Sisterhood of Temple Beth Am

### The Library Fund

**In Memory of:**

Morris Altman, by Roz and Steve Shapiro  
Lottie Grossberg, by  
Marwin and Zelda Feldman  
Harvey and Myra Horowitz  
Marion Macks, by Helen and David Hersh

### The Music Fund

**In Memory of:**

Rose Alpert Gerstman, by Lillian I. Gerstman

### The Prayer Book Fund

**In Memory of:**

Judy Goldberg Alcabes, by  
Amy and Eduardo Heumann  
Anne Judelson  
Jack Kuritzky, by Alan Kuritzky  
Sophie Kweller, by Rob and Shira Goldberg  
and Family  
Samuel Maxick, by Faye Maxick  
Tyler White, by Marianne and Bruce Wisbaum

### The Social Action Fund

**In Memory of:**

Lottie Grossberg, by Lillian Gerstman

**In Appreciation of:**

Grace Bluestone's creativity, by Lillian Gerstman

### The Thanksgiving Basket Fund

**In Memory of:**

Viola Ziolkowski, by Ron, Flossie and  
Aaron Ziolkowski

**In Honor of:**

Hallie Kenyon, on becoming a Bat Mitzvah, by  
Charles and Deborah Kenyon and Hallie Kenyon

### The Sisterhood Fund

**In Memory of:**

Dr. Irwin Kozinn, by Mark and Jodi Stulmaker

**In Honor of:**

Brian Cohen on his Graduation from High School, by  
proud parents, Ron and Jan Cohen

### The Yahrzeit Fund

**In Memory of:**

Harry Rachlin, by Myrna and Ivan Markowitz

### The Youth Group Scholarship Fund

**In Memory of:**

Eugene Daniels, by Ian and Andrea Frankfort

### The Rabbi Daniel E. Kerman Memorial Fund

**In Memory of:**

Shirley Davis, sister of Ruth Miller, by  
Richard and Roberta Handel  
Sadye C. Goldstein, by Morris Raiken  
Irving Louis Innerfield, by  
Lillian Innerfield Gerstman and Jen Innerfield  
Gussie Raikin, by Morris Raiken

**In Honor of:**

Marna and Dr. Irwin Burstein on their  
Golden Anniversary, by Lillian Gerstman

### The Ellen Davis Memorial Fund

**In Honor of:**

Lois and Don Kertman, on their 50th Anniversary, by  
Beverly B. Cohen and Bernie Davis

### The Abe and Shirley Marquisee Memorial Fund

**In Honor of:**

Joanne Rekoon, on her birthday, by  
Nancy and Larry Birzon

### The Dr. Barnett A. Slepian Memorial Fund

**In Memory of:**

Sandra Gale Klein-Davidson, by  
Sonya and Bert Breitbart

### The Marshall L. Glickman Memorial Fund

**In Memory of:**

Sandra Gale Klein-Davidson, by Marlene Glickman

### The Morris and Gussie Spivack Youth Library Memorial Fund

**In Memory of:**

Milton Gabin, by Donna and Morry Horwitz  
Sam Resnick, by Elaine and Marshall Weinstein

**NOTE:** *Writing a separate check for each donation allows us to credit the full amount of your contribution to the fund you specify for your gift.*

## COLLEGE CONNECTION 2008-2009

Once again this year, the Sisterhood of Temple Beth Am will be sending out 2 holiday packages to our college students away from home. The first one will be sent around Hanukkah time (to coincide with final exams), and the second will be sent out around Passover. These packages will include food items, holiday candy, study items, etc. If you would like your child included in this wonderful Sisterhood project, please either mail or email the following information to Sherri Davis by December 1st.

STUDENT'S NAME \_\_\_\_\_

STUDENT'S MAILING ADDRESS \_\_\_\_\_  
\_\_\_\_\_

NAME OF SCHOOL \_\_\_\_\_

YEAR IN SCHOOL (Freshman, graduate student, etc.) \_\_\_\_\_

LIVING ON OR OFF CAMPUS \_\_\_\_\_

PARENT PHONE NUMBER \_\_\_\_\_

This is a wonderful way for our Temple family to keep in touch with our students away from home. My contact information is as follows:

**Sherri Davis 64 Plumwood Court, East Amherst, NY 14051**  
**E-Mail: SEDavis1234@aol.com Phone: 689-3999**

The Jewish Community Center, The Holocaust Resource Center of Buffalo  
Temple Beth Am and Temple Beth Zion  
Present

**Words and Music from the Tree of Life**  
**Performed by SYNERGY**

Sunday, November 9, 2008  
3:30 PM at Temple Beth Am  
4660 Sheridan Drive in Williamsville

Join us for an afternoon of poetry and music performed by Synergy. This three-part, 75-minute program will begin with ONE PEOPLE THEN AND NOW – words and music from the golden age of Spain and contemporary America. Part two, WORDS FOR THE UNSPEAKABLE, will focus on Kristallnacht and the Holocaust. The afternoon will end with TO LIFE that focuses on life in Israel, from terrorism to peace.

Synergy was formed to introduce audiences to the finest of the world's chamber music in combination with poetry, to communicate a wide range of thought and emotion. See, hear and enjoy some of Western New York's finest string musicians, led by distinguished former Buffalo Philharmonic flutist, Laurence Trott. The concert will be followed by a reception.

Details and ticket information can be found in the 42nd annual Jewish Community Book Fair and Cultural Arts Festival Guide, distributed throughout the community and mailed to homes by early October and at [www.jewishbookfair.com](http://www.jewishbookfair.com).

For additional information contact:

Amy - 836-6565 [amy@tbz.org](mailto:amy@tbz.org)  
Laura Yellen - 633-8877 [laura.yellen@bethambuffalo.org](mailto:laura.yellen@bethambuffalo.org)  
Sandy Saada - 688-4114 x337 [ssaada@jccbuffalo.org](mailto:ssaada@jccbuffalo.org)  
Sylvia Schwartz - 634-9535 [hrc1050@aol.com](mailto:hrc1050@aol.com)

Tickets will be available in October at the front desks of TBA, TBZ and both JCC locations

Admission

\$18.00 adult (\$12.00 for adult groups of 15 or more purchased at the same time)  
\$10.00 student (\$5.00 for students groups of 15 or more purchased at the same time)

Please make checks  
payable to:  
**JCC Book Fair/Synergy**



### Between the Covers

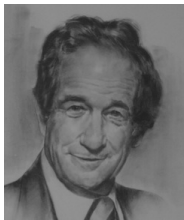
Is that Adam eating a fig? Why would a Church leader wear a yellow badge? What's up with the pointing angel?

On Thursday, October 16th at 7:30 PM, come to TBA's roundtable book discussion of "The Sistine Secrets: Michelangelo's Forbidden Images in the Heart of the Vatican," by Benjamin Blech and Roy Doliner (2008).

The authors combine their expertise in Talmud and Art History to produce a compelling and readable narrative about Michelangelo's motivation and knowledge to cleverly protest anti-Semitism in his own day, all the while painting the world-famous fresco commissioned by the Pope.

Discover the surprises layered into the paint, and enjoy the roundtable book discussion with friends at Temple Beth Am.

### Who would YOU nominate to receive the Daniel E. Kerman Award?



Do you know of an individual or an organization who has lived by the ideals that made Rabbi Kerman such a beloved leader? Who do you know that should be recognized for outstanding contributions to the Jewish community, the community at large, or both, in the promotion of Jewish education, religious activities, culture, or youth activities? This award carries not only prestige, but also a monetary award.

The Daniel E. Kerman Award Trustees; Daniel Epter, Berty Arwitz and Joseph Glickman, will be meeting soon. Please submit your suggestions, in writing, including a brief description as to why this individual or organization is deserving of this award, **no later than April 18th**, to:

Daniel Epter  
Kerman Award Trustee  
Temple Beth Am  
4660 Sheridan Drive  
Williamsville, NY 14221

Please note that nominees may **NOT** be paid members of any Jewish organization. Also, they do **NOT** need to be a Temple Beth Am member.



### Thank You to Bagel Jays...

for the lovely challahs you donate to our Temple Beth Am Family each and every Shabbat.

### Kudos for October 2008

Mazel Tov to Gary Bluestein, Todd Sugarman and Bruce Corris and all of the Temple Members who worked so hard to make the Walk Off Hunger and Summer Festival a success. We thank all of you who worked so diligently to make this day a day to remember.

Mazel Tov to Brian Louis Herzbrun and Melissa Carole Gesseck on their marriage on August 3rd in Little Ferry, New Jersey. Brian is the son of Phil and Marta Herzbrun and sister of Gina Herzbrun.

Mazel Tov to Matthew Stringer and Phoenix Amon who were married on August 15 in Rochester, New York. Matt is the son of Bruce and Suzette Stringer.



## Temple Beth Am Gift Shop



#### Gift Shop Hours:

Tuesdays: 4:00-6:00 PM  
Sundays: 9:00-11:45 AM

For special orders or to make an appointment, call Helene at 632-7688 or Phoebe at 634-2403.

#### Temple Beth Am

4660 Sheridan Drive, Williamsville, NY 14221  
(716) 633-8877 [www.BethAmBuffalo.org](http://www.BethAmBuffalo.org)



### Join us for Israeli Folk Dancing with Dorothy Lewis

Saturday, October 18th  
7:00PM - 9:00PM in the Social Hall

**Cost: \$10.00 per Adult & \$8.00 per Youth**

For more information, please call Linda Bergman at 741-4721.  
(No partner or experience needed.)

## THANK YOU!

Many thanks to all the members that donated baskets and items for the basket auction at Temple Beth Am's 1st Annual Summer Festival. Please support these generous businesses, and tell them that you are from Temple Beth Am!

<b>A Breath Away</b>	<b>Mary Kay</b>
<b>Active Workforce, Inc.</b>	<b>Master Chong's Tae</b>
<b>Barbara Oliver Jewelers</b>	<b>Kwon Do</b>
<b>Birzon Jewelers</b>	<b>Montage Hair Design</b>
<b>Buffalo Bills</b>	<b>Naturally Chiropractic</b>
<b>Buffalo Sabres</b>	<b>O Restaurant</b>
<b>Capello's Salon</b>	<b>Party Lite</b>
<b>Corn Maze</b>	<b>Paths, Peaks and Paddles</b>
<b>Deinhardt's Fine Wine and</b>	<b>Rob Lederman's</b>
<b>Spirits</b>	<b>Comedy Playhouse</b>
<b>Delta Sonic</b>	<b>Salon Avanti</b>
<b>Dino's Bocce Club Pizza</b>	<b>Say Cheese Pizza</b>
<b>Dipson Theaters</b>	<b>Shear Review</b>
<b>Excuria Salon</b>	<b>Tastefully Simple</b>
<b>Gerry's Car Service</b>	<b>The Wearhouse</b>
<b>Happyland Day Camp</b>	<b>Accessorized</b>
<b>Imperial Door Controls</b>	<b>Tupperware</b>
<b>Jenny's Clayhouse</b>	<b>Veronica's Pastries</b>
<b>Joshua Usen, DO</b>	<b>Walden Galleria Mall</b>
<b>Larry Birzon, Chiropractor</b>	<b>Westwood Country Club</b>

## Temple Beth Am Funds

When you choose to honor those whose memories are dear to you, or express your gratitude for a joyous occasion, you are invited to make a contribution of *Tzedakah*. The Temple has a long list of funds from which you may choose for your donation. Please feel free to contact the Temple office at 633-8877 if you would like to make a contribution and need help choosing the correct fund.

## Upcoming Services *(continued from page 2)*

### Parashat Bereshit

Genesis 1:1 – 6:8

**Friday, October 24, 2008**

**7:30 PM** Erev Shabbat Service

**Saturday, October 25, 2008**

**9:00 AM** Torah Study

\*\*\*

### Parashat Noach

Genesis 6:9 – 11:32

**Friday, October 31, 2008**

**7:30 PM** Erev Shabbat Service

## October 2008 Memorial Anniversaries

### October 3, 2008

David Abrams, Rebecca Alcabes, Robert Algase, Sigmund Arywitz, Esther Auerbach, Meyer Balsom, Leah Berke, Marlene Brickner, Nathan Bunis, Gary P. Burke, Nadya Busnar, Nathan Cohen, Dorothy Corwin, David Cytryn, George Engel, George Jacob Engel, Ralph Epstein, Alfrieda Feldman, Max Feldman, Linda Fierstein, Eduard Froelich, Marshall Levi Glickman, Evelyn Goldwater, Alan Harrishburg, Anne Helfant, William Hirsch, David Horblit, Eva Leshaw, Jean Lyons, William Mariner, Adele Mueller, Leo Mueller, Bernard Polakoff, Morris J. Powsner, Morris Reeder, Fanny Reissner, Leo J. Rosen, Herman Rosenthal, Lewis Ruslander, Edward M. Schulman, Eunice Small, Ruth Taksen, Leonard Teplitsky, Louis Topper, Louis E. Weinberg, Sylvia Weinstein, Yankel Winiger, Jack Yalof.

### October 10, 2008

Ben Antonoff, Robert Brainard, Earl W. Cary, Edward Cohen, Mildred Engel, Richard Engelhardt, Isaac Feldman, Selma Fortgang, Daniel Goldenberg, Lillian T. Goodman, Julia Harrishburg, Anne Helfant, Jane Selya Heskins, Clara Judelsohn, Feyga M. Kolnik, Lillian Kossoff, Elena Kreps, Max Lieberman, Sheila Macoff, Joseph Palanker, Harry Raiken, Max Roberts, Joseph Roth, Simon Rubin, Annette Schaefer, Chuck Schepart, Abe Schulman, Leonard Schwartz, Selma Siegel, Abraham Julius Silver, Samuel Sirkin, Esther Stein, Evelyn Bikki Swados, Herman S. Umof, Charles Weitzner.

### October 17, 2008

Minnie Baker-Silverman, Adrienne Baltuch, Joseph Block, Marvin Braiterman, Martyn F. Cominsky, Alan Davis, Ruveya Elberg, Dr. Martin Friedland, Fanny Friedman, Jacob Fruchtbaum, Max Garbarsky, Max Ginsberg, Louis Goldberg, Zeldia B. Goldenberg, Isidore Goldstein, Hyman Guttman, Gordon Kantrowitz, Irving Kaprove, Solomon Kusnitz, Pauline W. Lindenfeld, Jack Mann, Hana Moller, Arthur Reichard, Rudolph Remsoh, Joseph Rosberg, Anna Rosenthal, Ida Saran, Milford Sarfaty, Lillian Schaefer, Ben Shapiro, Betty Levin Simon, Dr. Barnett Slepian, Paul Strauss, Esther Stromberg, Joseph Stulberg, Dorothea Bary Subkoff, Morris Taksen, Frank Tripi, Jeanette Wasser, Stephen Weinstein, Rosebelle Weissman, Irwin Winer.

### October 24, 2008

Leo Bachner, Seymour Berger, Mildred Bluestone, Moisey Bronshteyn, Sara Cohen, Irving Finkelstein, Jack Friedfertig, Abraham Friedman, Anne E. Godshaw, Louis Goodman, Herman Haber, Dora Heskins, Daniel Seth Holmlund, Ruth Koven, Hyman Mednick, Herman Nadel, Sarah Pliss, Fanny Pritikin, Belle Raikin, William Raikin, Allan Robbins, Richard Ruslander, Helen J. Silver, Minnie Baker Silverman, Lawrence Slaybod, Abe Sohinki, Jerome Steier, Louis P. Steinberg, Stephen Sweet, Lewis Toubkin, Ruth Wallins, Belle Weiss, Dorothy Winkel.

### October 31, 2008

John W. Atkinson, Mary Jane Atkinson, Fannie Avrunin, Debra Cohen Bloomberg, Charles Cassover, Angela Cimato, Lila Cowan, Paul Davis Sr., June Eberlin, Hannah Fishman, Evelyn Fox, Paul Fox, Nancy Frankfort, Bessie Fudeman, Allen Gilman, Leona Glazer, Sarah Goldberg, Esther Grossberg, Ida Grosse, Ernest Gunzburger, Gertrude Haniford, Fannie Hirsch, Simon Jacobs, Simon Kareff, Gilbert Kleeberg, Joseph Kornblatt, Gail Jacobson Lang, William Lesser, Alan Lieberman, Frances Madonia, John Main, Rose Pastor, Benjamin Paull, Ernesto Perez-Carrillo, Rachel Powsner, Theodore Rose, Harry S. Rubin, Harold S. Ruslander, Sylvia Adler Safir, Rose Schnitzer, Sam Serotte, Carl Silber, Belle Simon, Lee Singer, Philip Slepian, Harry Louis Smith, Jackson Traub, Bacie Tsypenyuk, Irving Weiner, Reuben Weinstein, Bernard Zinderman.

**Bage Jays**  
Hopkins at Klein Rd • 639-1000  
Marshall's Plaza • 874-1800  
Millersport & North Forest  
204-0001

Bagels & Shmears • Deli Sandwiches  
Catering Trays - Kiddush, Shiva or any occasion

**Jonny C's NY Deli & Caterers**  
716-688-8400 • Jonnycs.com  
9350 Transit Rd. • East Amherst, NY  
Drop off or pick up • Full service catering  
Any Occasion

**BROMPTON HEIGHTS, INC.**  
Luxury Senior Living  
Assisted Living, Memory Care and  
Early 2008 Independent Apartments

Newly Renovated  
275 Brompton Rd. • Williamsville, NY 14221  
716-634-5734  
www.bromptonheights.com

Students 18 Months - 8th Grade receive an excellent General & Judaic education, giving them the tools to move forward in life.

Call today for a personal tour.  
*Building our Jewish future one student at a time*

**Kadimah SCHOOL**  
בית ספר קדימה  
Samuel Friedman Foundation Scholarships available to members of Temple Beth Am

Jill Mazzola • Director of Admissions  
836-6903 x105  
jillmazzola@roadrunner.com  
1085 EGGERT RD • AMHERST, NY  
www.kadimah.org

The Mesnekoff Family has served WNY for 3 Generations

**Mesnekoff FUNERAL HOME**  
8630 TRANSIT ROAD • EAST AMHERST, NEW YORK 14051  
PHONE: 716-639-8890 • FAX 716-639-8479 • www.mesnekoff.com  
JAY L. MESNEKOFF President / Owner • Licensed Funeral Director in New York & Florida

"In the Family Tradition"  
On-Line Tributes Now Available

For Advertising Information, call **CHRIS REEVES** at LPi today!  
716-863-8414 • CReeves@4LPi.com

**ADS CAUTION! AT WORK**

Call LPI at 1-800-477-4574 to Discover How to Put This Space to Work for Your Business!

**CALL FOR YOUR FREE RECYCLING BIN TODAY!**

**PAPER RECYCLING**  
716.893.2027  
ABITBI! **PAPER RETRIEVER.COM**

**STOVROFF & TAYLOR REALTORS**  
DIANE G. SAFIR  
Associate Broker  
VM: 743-5875 • Cell: (716) 863-5215  
Email: DianeSafir@adelphia.net

**BENSONS Surgical Supply**  
1025 Kenmore Ave. • Kenmore, NY 14217  
332-0404 • www.bensonsurgical.com  
ALL OF YOUR HOME HEALTH CARE NEEDS  
Authorized Dealer • Trained Certified Fitting

**Leon R. Komm**  
Licensed Jewish Funeral Director

**AMHERST Memorial Chapel, Inc.**  
716-636-4174 281 DODGE RD. in Getzville  
W.N.Y.'s Jewish Owned Funeral Establishment Providing Comfort & Compassion So Close To Home When You Need it Most

**Leon Komm & Son Monument Company**  
716-893-2500 1640 EAST DELAVAN AVE. in Buffalo  
Three (3) Generations Experience  
Complete Manufacturer Of Monuments • Largest Selection in W.N.Y.

**BS&P Brock, Schechter & Polakoff, LLP**  
Certified Public Accountants Consultants  
"A Partner In The Community"  
726 Exchange St., Ste. 822 • Buffalo  
(716) 854-5034 www.bsppca.com

ADVANCED COLLEGE APPLICATION SERVICES  
www.acapservices.com • email: cindy@acapservices.com  
**CYNTHIA E. OPPENHEIMER**  
EXECUTIVE DIRECTOR & CONSULTANT ADVISOR  
AP S telephone: 716-308-4843  
"PLANNING YOUR HIGHER EDUCATION WITH A PERSONAL TOUCH"

**HOTEL indigo**  
10 Flint Rd. • Amherst  
716.689.4414  
Think of Us When Planning:  
~ Bar & Bat Mitzvahs  
~ Bridal & Baby Showers  
Overnight for all Occasions  
Golden Bean Restaurant & Phi Bar  
Complimentary Airport Transportation  
Indoor Heated Pool & Jacuzzi  
State of the Art Fitness Center  
www.hotelbuffaloamherst.com

**TIME TO ADVERTISE?**

If you feel your business needs a little more attention, give LPi a call at...  
**1-800-477-4574**

**ADS CAUTION! AT WORK**

Call LPI at 1-800-477-4574 to Discover How to Put This Space to Work for Your Business!

Could You Use A No-Interest Loan?  
Maybe We Can Help!  
Call Tara • 882-1166

Since 1997  
**Hebrew Benevolent Loan Association**

Buffalo's Jewish Free Loan Society

**NATIONAL WAREHOUSE FURNITURE**  
Quality furniture at Affordable Prices  
**DAVID SAFIR**  
863-5218  
919 Broadway • Buffalo

HAVE YOU EXPLORED THE WORLDS OF OPPORTUNITY AWAITING THOSE WHO ADVERTISE WITH US?

Discover how to take advantage of this cost effective advertisement space for your business.

**LPi**  
Liturgical Publications Inc  
Connecting Your Community™  
CALL 1-800-477-4574

**JOSEPH B. NEIMAN, M.D., F.A.A.D.**  
Certified by the American Board of Dermatology

- Hair Transplantation
- Botox & Collagen
- Restylane & Radiesse
- Laser Hair Removal
- Licensed Aestheticians
- Facials, Peels & Microdermabrasion
- Photorejuvenation
- Spider Vein Treatment

1140 Youngs Road, Williamsville  
www.neimancenter.com  
**716-688-0020**

**BERGER & BERGER**  
MICHAEL BERGER  
Over 30 Years of Practice in Immigration Law  
Voted Best Attorney in the Field of Immigration Practice by The Best Lawyers in America and Who's Who in Executive and Professionals  
Past Board Member of American Immigration Lawyers Assn.  
website: www.usavisa.net • 555 International Dr. (Suite 800) Buffalo N.Y. 14221  
Toronto, Rochester, Atlanta By Appointment

Practice Limited To All Areas Of Immigration & Naturalization Law  
**WILLIAM BERGER**  
Over 30 Years Legal Practice with U.S. Gov't (Retired)  
**(716) 634-6500**



A Family of Families  
**Temple Beth Am**  
 4660 Sheridan Drive  
 Williamsville, New York 14221

Non-Profit Org.  
 U.S. Postage  
**PAID**  
 Permit No. 3870  
 Buffalo, New York

**October 2008** For the most current information, visit our web site: [www.BethAmBuffalo.org](http://www.BethAmBuffalo.org) **Tishrei-Cheshvan 5769**

Sunday	Monday	Tuesday	Wednesday	Thursday	Friday	Saturday
<p>This calendar is prepared more than one month in advance of publication and is subject to change.</p>		<p>The Judaica Shop is open During Religious School.  <b>Sundays</b>            9:00 AM to 11:45 AM  <b>Tuesdays</b>            4:00 PM to 6:00 PM</p>	<p>1            10:30 AM Rosh Hashanah  <b>Second Day Service</b></p>	<p>2            7:00 PM Knitting Group</p>	<p>3            9:00 AM Vus Tut Sich?  <b>Noon: Communication Committee Meeting</b>            6:00 PM Erev Shabbat Shuvah Service</p>	<p>4            9:00 AM Torah Study</p>
<p>5            9:00 AM Religious School            9:00 AM Ganainu            1:30 PM Kever Avot</p>	<p>6            Building Closes at 3:00 PM</p>	<p>7            4:30 PM Religious School            6:00 PM BATY Pizza Sale            7:30 PM Executive Committee Meeting</p>	<p>8            6:00 PM Early (A-L) Kol Nidre Service            8:45 PM Late (M-Z) Kol Nidre Service</p>	<p>9            9:00 AM Early (A-L) Yom Kippur Service            11:45 AM Late (M-Z) Yom Kippur Service            2:15 PM Reflections            3:00 PM Family Service            4:15 PM Mincha Service            6:00 PM Yizkor and Ne'ilah Services            7:00 PM Break Fast</p>	<p>10            7:30 PM Erev Shabbat Service</p>	<p>11            9:00 AM Torah Study            10:30 AM Shabbat Morning Service            Bar Mitzvah of Michael Rapaport</p>
<p>12  <b>NO RELIGIOUS SCHOOL</b></p>	<p>13  <b>OFFICE CLOSED</b></p>	<p>14            10:30 AM Joint Sukkot Service at Temple Beth Am  <b>NO RELIGIOUS SCHOOL</b></p>	<p>15  <b>NO H.S.J.S.</b></p>	<p>16            7:30 PM Between the Covers Book Talk</p>	<p>17            9:00 AM Vus Tut Sich?  <b>10:00 AM Fall Fun</b>            7:30 PM Erev Shabbat Family Service Grade 6 &amp; 7 participating Kabbalat Torah</p>	<p>18            9:00 AM Torah Study            7:00 PM Israeli Dancing</p>
<p>19            9:00 AM Religious School            9:00 AM Grade 8 Giborim            9:15 AM Men's Group Meeting            9:15 AM Parent Council            11:15 AM Religious School Sukkot Lunch</p>	<p>20            Building Closes at 3:00 PM            7:00 PM Simchat Torah Service/ Consecration</p>	<p>21            10:30 AM Joint Liberal Shemini Atzeret Service and Yizkor at Temple Beth Zion  <b>NO RELIGIOUS SCHOOL</b>            Temple Topics Deadline</p>	<p>22            December Temple Topics Articles Due</p>	<p>23            7:00 PM and 8:15 PM Adult Education</p>	<p>24  <b>10:00 AM Fall Fun</b>            7:30 PM Erev Shabbat Service</p>	<p>25            9:00 AM Torah Study</p>
<p>26            9:00 AM Religious School            9:00 AM High School Ch@t Program            11:00 AM Sisterhood Paid-Up Brunch            3:00 PM Dr. B. Slepian Memorial Service</p>	<p>27            Building Closes at 3:00 PM</p>	<p>28            4:30 PM Religious School            6:00 PM BATY Pizza Sale            6:15 PM Finance Committee Meeting            7:30 PM Board of Trustees Meeting</p>	<p>29            12:00 PM Sisterhood Lunch at Carrabba's            6:30 PM H.S.J.S.</p>	<p>30            5:00 PM B.J.E. Teacher Enrichment Program at Temple Beth Am            7:00 PM and 8:15 PM Adult Education</p>	<p>31            9:00 AM Vus Tut Sich?  <b>10:00 AM Fall Fun</b>            7:30 PM Erev Shabbat Service</p>	<p>November 1            9:00 AM Torah Study            3:00 PM Rummage Sale Set-Up</p>
<p>November 2            9:00 AM Religious School  <b>9:00 AM Sisterhood Rummage Sale</b></p>	<p>November 3            Building Closes at 3:00 PM</p>	<p>November 4            4:30 PM Religious School            6:00 PM BATY Pizza Sale            7:30 PM Executive Committee Meeting</p>	<p>November 5            11:30 AM Sisterhood Bible Study            6:30 PM H.S.J.S.</p>	<p>November 6            7:00 PM Knitting Group            7:00 PM and 8:15 PM Adult Education</p>	<p>November 7  <b>10:00 AM Fall Fun</b>            6:00 PM Erev Shabbat Service</p>	<p>November 8            9:00 AM Torah Study            10:30 AM Shabbat Morning Service            Bat Mitzvah of Courtney Sugarman            7:00 PM Israeli Dancing</p>